

**2022.11.18-
2023.1.21**

**ARKO Art Center, Gallery 1, 2
SpaceFeelux**

GEOJE SUMDO

Eunbi Kwon

Hyunjoo Kim x Kwanghee Cho

NoNewWork

dianalab

Rojava Film Commune/

Komîna Fîlm a Rojava

Breakwater

(Youngsook Choi x Taey lohe)

Small Batch Studio

Lab C

Jeppe Hein

OverLab.

Wu Mali x Bamboo Curtain Studio

Jelly Jang

Komunitas Gubuak Kopi

Local in the Making

ARKO Art Center Thematic Exhibition

Local in the Making

The pandemic has made it more important than ever to practice sustainable lifestyles and engage in safety, solidarity, care, and community activities. As it became increasingly difficult to travel to other countries, interest in domestic destinations that used to be overlooked, such as a local commercial district, grew. Another change brought on by the pandemic was the spread of flexible lifestyles that formed relationships with various regions via a wide range of methods. As face-to-face interaction with the outside world was restricted during this period, remote systems and social networking services led to the diversification of communication and residential environments, further enhancing their efficiency. Such transitions rapidly broke down the physical and psychological distances and borders between people and regions. The new era made it possible to break down the geographical local concepts that were clearly classified by administrative districts to smaller towns and neighborhoods. As a result, it required a new approach outside of the perspective of scale or administrative district that seemed to have a strong physical substance. This represents that locality affects not just natives of a specific region but also various incoming populations, and that how this concept transformed while undergoing constant changes to form such distinct characteristics.

ARKO Art Center's thematic exhibition titled "Local in the Making" aims at redefining locality by breaking away from the concept of a fixed local to a process where various social relations intersect for transformation and generation. Such ideas are built on the interest of solidarity and care, a complex approach to living, and a shift toward a new awareness about changing localities. The exhibition will examine various modes of generating and expanding locality through various types of projects under the foundation of building temporary artistic relationships. This is founded on the idea that artistic activities intervene in the lives and cultures of people from other regions who do not dwell there, as well as on the new encounters and solidarity with neighbors based on a region. Furthermore, the preservation of a region's cultural values is promoted through certain media, while a win-win community is temporarily formed to study community issues through artistic activities. Though all of the works displayed in the exhibition do not share the common temporal condition of the pandemic, we must take a closer look into the art project associated with environmental issues that have been affecting a specific region for ages, as well as its impact, even to this day.

According to British geographer Doreen Massey, "All localities can be understood only within its associations beyond its borders. In other words, placing a region within a wider context can make it possible to understand the changing fate of that region, and this in itself becomes its feature. [...] Struggling against other

2022 ARKO Art Center Thematic Exhibition

places does not construct the identity of a distinct place; instead, it is built through specific interactions with them. The identity is plural. Interaction is not the place itself, but a relationship made among the actors within the places."* This exhibition reveals the cultural and historical value of communities based on diversity beyond geographical borders focusing on such intersecting and productive localities. It does not focus on specific regions or community members. Rather, it emphasizes how solidarity is formed—translocality with regions and networking and care that form new relations.

Some of the local and community intervention examples are the work of approaching the ship culture of Gyeongsang-do; a project that focused on the Uijeongbu military village community; the construction of a virtual feminist artist residency; a discrimination-free network of shops for addressing human rights issues and supporting minorities in Jeju-do; a project based on research on the ecosystem of the Busan seas; a collaboration of artists in Gwangju and the Philippines in a translocal scale; a community value expansion project that shares local issues of Solok, Indonesia; a locality recipe that generates communities with tastes of individual memories instead of administrative regions; and a care and solidarity project for those who experienced war in Germany. This exhibition, joined by 14 teams, takes a new approach in the locality of the current time point by developing various art projects that deal with 14 different types of localities.

The exhibition will recreate and show the core art activities of the projects together with archive materials and outcomes of activities that contain the process of each project. Furthermore, "Making My Own Recipe" and "Campaign" programs that require visitors' participation will take place, along with an academic conference linked with the exhibition under the theme of "translocality and cultural behavior" and co-hosted with the Society of Contemporary Art Science. The exhibition will also feature performances and events in link with each project. Through the recomposition of locality where an assortment of relationships intersect and are formed, it will offer visitors the opportunity to artistically approach a locality that encompasses the situations and issues of not just a specific area but also its vicinity, as well as the various emotions surrounding it. Using this approach, it is anticipated that viewers will be able to build relations with elsewhere beyond physical places or imagine a temporary community in which emotional solidarity is possible while examining the methods for social intervention to support life.

*Doreen Massey, 『Space, Place, Gender』, Translated by Jung Hyunjoo, SNU Publishing & Cultural Center, 2015, pp.219~220

▪ GEOJE SUMDO

GEOJE SUMDO has been pursuing projects on island ecosystems and the infrastructure industry based on Geoje-do. Starting with horticultural program for the shipbuilding laborers in 2020, it held exhibits on idle shipyards, and since 2021, it has been collecting data on ports and shipyards in the southeastern region of the Korean Peninsula to visualize it. GEOJE SUMDO aims to continuously accumulate data through surveys and research to construct an archive for the Korean maritime industry, and to draft new marine geography focusing on the oceans and industry in the mid- to long-term.

▪ Eunbi Kwon

The artist focuses more on the back than the front side of people. It is impossible to stand neutrally on sloped land, according to Kwon. She has been interested in various issues such as capitalism, politics, society, and colonization based on the theme of the social role of art. Most of her art projects were created through participation and collaboration with viewers. Some of the projects she participated in are *The Phenomenal Transition* (Museum of Contemporary Art Busan, 2021), *Scale of Equality* (Gyeongnam Art Museum, 2022), and *Sisters, We Grow* (Alt Space Loop, 2022).

▪ Hyunjoo Kim × Kwanghee Cho

Hyunjoo Kim and Kwanghee Cho focus on individuals and communities living in modern civilization that was lost or fragmentally maldistributed by questioning the existence and society with "Who am I?", as well as the scenery of the land that these individuals and communities have built. In addition, they name each individual in a certain region or incident and expand the horizons of understanding and sympathy for the detailed lives of individuals and groups through oral history, thereby bringing to the surface the voices of other lives that were forgotten or neglected from tangled life to the outside world. Starting with the *Ppaeppeol - Wrinkles* project at Ppaeppeol Village in Uijeongbu since 2019, artists and residents are directly and indirectly influencing each other by sharing ordinary meals, having conversations, and engaging in art games to experience changes that may or may not be visible. Recently, the two artists participated in numerous group exhibitions and projects such as *Ppaeppeol – Montage of Time and Space* (Art Camp Black, 2022), *Hands-Touching Memories and the Future: The Manin Hands Project* (Online Exhibition, 2021), *Warm Revitalization* (Gangwon International Biennale, 2021), and *Alt Visual Culture Factory* (ARKO Public Art Project, 2021).

▪ NoNewWork

NoNewWork is a feminist group that creates visual images. The group engages in various activities such as working between feminism and art, discourse, critique, and movements. "No New Work" is also the title of Ellen McMahon's work. The group was formed to sympathize with the works of McMahon who melted the patriarchal order, roles of men and women, and the gender subconscious of dividing femininity and masculinity, and to visually express several ongoing issues related to females by using their own experiences. They share how women and artists should behave toward life while attempting to make the behavior read and heard with new voices, rather than with only new outcomes. NoNewWork sought out works in which visual art workers can band together in the many feminist issues that have surfaced, and it has served as a platform to record and examine feminism and art. They stud the current point in the orbit of contemporary art and visual arts, and execute

small and large projects through fluid collaborative methods by interacting with other artists, critics, exhibition planners, and activists. People from various sectors participated in the "Temporary Political Community" for this exhibition.

* NoNewWork's "Temporary Political Community"

Kim Sueyi Visual artist, funeral director
Kim Sueyi explores and acquires things related to life and death that are popularly used in human life, and makes an attempt to transition them into her works. She enjoys arranging and combining the disorder between those that shine and those that do not in her writings, drawings, and objects. She continues her job as a funeral director after becoming curious of the realistic situations after death. She compiled a collection of death certificates titled *Only Those with Clear Cause-Effect Relations Are Written* and wrote the essay, *Nobody Knows Death*.

Bomroya Visual artist, planner/mediator
Bomroya works and plans with an interest in the point where history and cases having different personal experiences are developed and articulated. Narratives represented as coincidental happenings or one side of an incidental pass through urbanity, women, and dailiness and thus are visualized with a variety of media like drawings, texts, media, and photo archives.

Ji Eun(Camille) Sung Art historian, art critic
Ji Eun Sung is fond of things that move. She reads, thinks, and writes about the movement of the body and objects that appear in modern art history and today's art. She attempts to make more active movements for women and queers through academic and critical works.

Songjinhee Writer, planner, anti-violence activist
Songjinhee puts emphasis on revealing things that are weak and broken among various issues that conflict between current changes and personal life out into the world. She planned and produced a female activist archive of fighting against gender violence, and participated in producing a code of conduct for a gender-equal art environment.

Alo Engraving worker
She lives nearby Dumulmeori and works on recording and expressing scenes she encounters here. She makes relationships with the inside and outside of the scenes in her works. She is growing amidst neighbors who farm, forests near and far, and all accessible waters and seeds.

▪ dianalab

dianalab is a group that researches and implements expressions together with social minorities. As an collective created by individuals from different fields such as media art, sound art, textiles, photography, and videos, the group fine-tunes everything, from physical spaces to a fleeting moment, and even the invisible air, to be more delicate. Jiro Ueta, one of the participants in this exhibition, uses photos, videos, and graphic designs to shed light on areas that people do not mind or tend not to mind. They stay in different sites in urban regions to take photos and videos. Their best-known films are *The Noise of the Noises* (Nara International Film Festival, 2014) and *Listen to the City's Okbaraji Alley* (filmed and produced by Ueta, International Experimental Film Festival, 2016). Another participant, blblbg distributes minor and weird things to random people. They also participated in the *4th Anyang Public Art Project* (Anyang Pavilion, 2014) and the group exhibition *Internet Black Market* (Tongui-dong Boan Inn, 2016).

Yi mi-sun Cartoonist
Yi mi-sun works as an art instructor, a caricature artist at events, and a volunteer for special education. She moved to Gangjeong Village in Seogwipo, Jeju-do in 2012 and since has been recording her personal and trivial daily life on the outskirts of activities against the construction of a Navy base and activities for peace. Her nicknames are Bokhee (Jaesup) and Rhee Mi-sun.

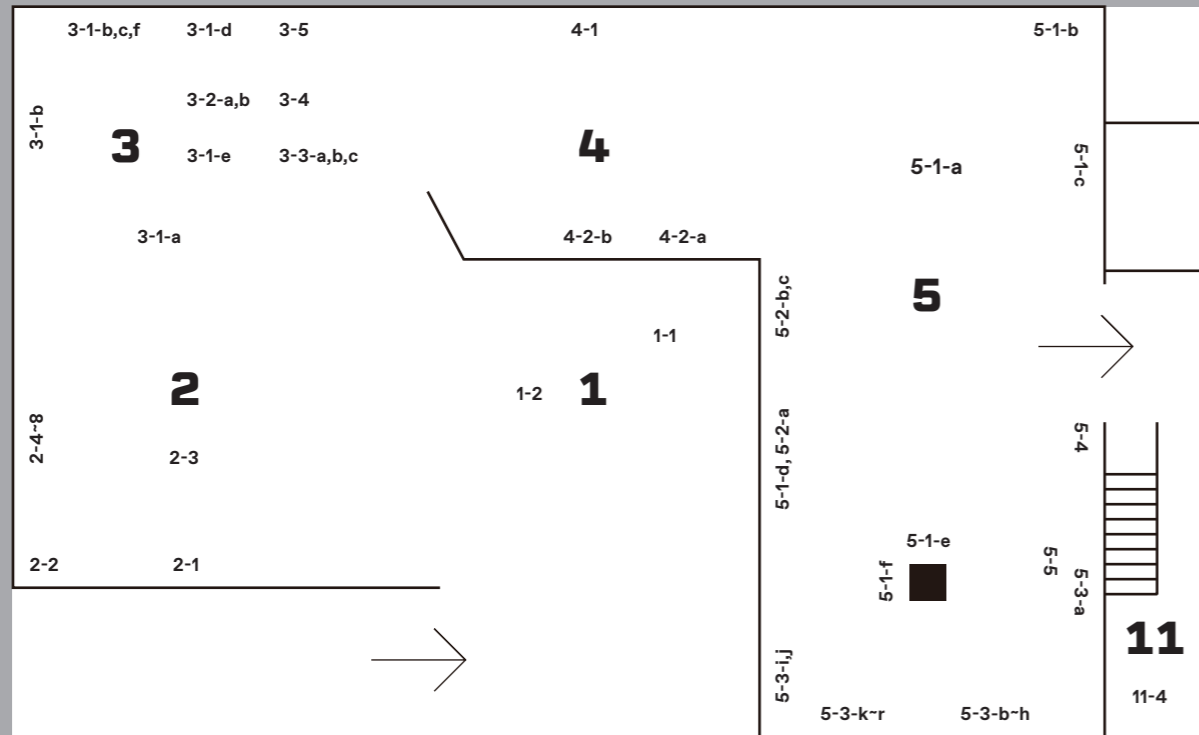
Choongyeol Lee Feminist contemporary artist, planner, education activist
Based on her critical mind on recreation bound by perspective and phallogocentric viewpoints, Choongyeol Lee encourages various types of expression and engages in works and plans that propose to become the "main agent" through senses and experiences. She resists the governing ideologies through prolonged non-marriage relationships and reckless "acting like the rich" to erase the border between art and life.

za choeng Visual artist, activist
za choeng lives with one name given by Suni and Cheori, and three that she named herself. Due to her fondness for writing and moving, she engages in the labor of listening, thinking, and making in the boundary between art and activities. She owes the will to care, learn, and live on friendships, but she is quite introverted.

Mihyang Choi Performing arts creator, artist-slash-activist, mother
Mihyang Choi explores regions, women, and art, and finds narratives of women by planning exhibits while seeking existence and solidarity. She is active in a space that creates restrained freedom through an approach of "not othering" for "minorities." She focuses on things that begin with her, and she is enjoying her life with humor.

hyewon Viewer, visual art producer
hyewon works to make a living while exploring images she wants to draw. She is studying with the belief that queer ecofeminism can make the image of the world a bit more equal and concrete.

1F Gallery 1



1. Komunitas Gubuk Kopi

1-1. Komunitas Gubuk Kopi, *The Pos Ronda Project*, 2022, Pentongan (a bamboo tube that produces sound as a communal alarming system), Pos Ronda room installation, Pos Ronda attributes trophy, charter, community photo, picket schedule, picket List, calendar, dues Book, security equipment, flashlight, prayer tool set, farming tools, first aid kit, clock, dominoes, game cards, TV, domino game table, 6×6m
- Collaborator : RW 06 Kampung Jawa

1-2. Komunitas Gubuk Kopi x Taufiqurrahman Kiffu, *Silaturahmi (Meet and Greet)*, 2021, 5 sheet textile installation, 1x2m

2. GEOJE SUMDO

2-1. GEOJE SUMDO, *Wave 2: Steel Ark, Drifting Agora*, 2022, Nautical Chart (Research Trip + Sailing Forum), Digital Print

2-2. GEOJE SUMDO, *Wave 2: Steel Ark, Drifting Agora Exhibition Touring*, 2022, VR, 165×93cm - With Binding

2-3. GEOJE SUMDO, *Wave 2: Steel Ark, Drifting Agora Exhibition Clip Videos*, 2022, QR CODE LINK, Variable Size - With Binding

2-4. GEOJE SUMDO, *Wave 2: Steel Ark, Drifting Agora Brochure*, 2022, Printed on Paper, 59.4×42cm

2-5. GEOJE SUMDO, *Wave 2: Steel Ark, Drifting Agora Sailing Forum booklet*, 2022, Printed on Paper, 21×29.7cm

2-6. Lee Young June, *Voyage of Knowledge_Report from the Tour around National Trading Ports 01, 02, 2021*, Printed on Paper, 29.7×21cm

2-7. Lee Young June, *Thoughts on Sailing Forum*, 2022, Printed on Paper, 29.7×21cm

2-8. Lee Young June, *Stories of the Myriad Ships We Have Spotted_Tong Young*, 2022, Printed on Paper, 29.7×21cm

3. Lab C

3-1. Lab C, *Delta Space*, 2022, making film, view master, reels, wood, box, mixed media, dimension variable
- Video : Meditory / Design : Eunyong Kim (die hafency) / Production Support : Doki KIM, Minkyong GIM, Jongwon KIM, Intelligence Design / Research Support : Sohyun BAEK, Sangjeong LEE

a. Lab C, *Lab C case*, 2022, installation of researched tools and documents, dimension variable

b. Lab C, *knatty wood*, 2022, thread, wood, 3000×1500×30mm(1ea), 3000×1000×30mm(2ea), 3000×500×30mm(2ea), 3000×800×30mm(1ea)

c. Lab C, *delta diagram*, 2022, acrylic panel, light box, mixed media, 800×1100×450mm

d. Lab C, *oral boundary*, 2022, digital printing on fabric, 3000×2400mm

e. Lab C, *VM: 2019-2022*, 2022, view master 3ea, reel mount 12ea, 120×120×80mm

f. Lab C, *making film*, single channel video, 20minutes

3-2-a. Doki KIM, *From The Sea*, 2022, stone, sea water, text book, dimension variable
- Sound : Manyoung JUNG

3-2-b. Doki KIM, *Children Of The Sea*, 2021, performance(performer: Seungyi Hong)

3-3-a. Jinjoo KIM, *Drawing Mt.Gubong*, 2019, drawing accordion book, 200×150mm

3-3-b. Jinjoo KIM, *Drawing Mt.Sujeong*, 2020, drawing accordion book, 200×150mm

3-3-c. Jinjoo KIM, *Drawing Jeoryeong*, 2021, print on black papers, drawing accordion book, 200×150mm

3-4. Manyoung JUNG, *Tactile Sounds*, 2020, wood, motor, plaster, mixed media, 900×900×820mm

3-5. Jeun LEE, *Sea hare Practice #1, #2, #3, #4*, 2021, 2 channel video, 1min 1sec / 1min 14sec / 3min / 1min 48sec each

4. OverLab.

4-1. OverLab., *The Cycles : Archive for Cycle001-006*, 2022

4-2. OverLab., (Cycle007)

a. Dokyung Kim x Jisoo Seo x JunJun Montelibano x Joshua Serafin, *We are Linked*, 2022, video, 5min 25sec

b. JunJun Montelibano x Joshua Serafin x Dokyung Kim x Jisoo Seo, *Panglugayawon(Odyssey)*, 2022, video, 2min 48sec

5. NoNewWork

5-1. NoNewWork, (Safety Net for a Virtual Feminist Artist Residency)

a. Choongyeol Lee, za cheong, *Safety Net for a Virtual Feminist Artist Residency*, 2022, fabric on print, steel frame, 240×240×250cm

b. Bomroya, *The Eyes Vulnerable to the Sunset*, 2022, single channel video, color, sound, 14min 30sec
- Commissioned by Women & Culture Network

c. Songjinhee, Choongyeol Lee, za cheong, Mihyang Choi, *Workshop to Make a Safety Net for a Virtual Feminist Artist Residency*, single channel video, color, sound, 5min

d. za cheong, *a nor b(remastered)*, 2022, cushion insert that the artist's family used to have, texts and drawings from the artist's works made three years ago, 50×50cm

e. Choongyeol Lee, *Periscope, A Mirror into Another Perspective*, 2018-2021, mixed media, 23×162×40cm

f. Choongyeol Lee, *A Walk*, 2022, Single channel video, 12min 34sec

5-2. NoNewWork, (A Virtual Funeral for Queer Feminists: 'al m-th)

a. Kim Sueyi, Bomroya, hyewon, *A Virtual Funeral for Queer Feminists: 'al m-th*, 2022, books, 14.8×21cm

b. Kim Sueyi, Bomroya, hyewon, *A Virtual Funeral for Queer Feminists: 'al m-th*, 2022, mushroom-terrarium, 22×45×34cm

c. Kim Sueyi, Bomroya, hyewon, *A Virtual Funeral for Queer Feminists: 'al m-th*, 2022, single channel video, color, sound, 21min

5-3. NoNewWork, (Artist in Safety Net for a Virtual Feminist Artist Residency)

a. Ji Eun (Camille) Sung, *Log of a Temporary Resident*, 2022, notebook on pencil, 9×14cm

b. Yi mi-sun, *#onepageaday*, 2022.07.18., 2022, a found wood panel, fungus resistant paint, acrylic paint, 52.6×74.6cm

c. Yi mi-sun, *Energy Road*, 2014, brochure cartoon, 15×21cm, 44p

d. Yi mi-sun, *Someone's Dogs that I Like*, 2020, reusable poster, pencil, 15.4×22.2cm, 10p
- Commissioned by *Miryang x Gangjeong We Live*, Gangjeong Peace Merchant Cooperative, Committee against the Miryang Power Towers

e. Yi mi-sun, *It Was Like That*, 2020, reusable poster, pencil, 15.5×22.2cm, 12p
- Commissioned by *Come Play at my Place - You are also picked up*, Green Gunso Bandi

f. Yi mi-sun, *Me, the Class*, 2020, reusable poster, pencil, 15.7×22.8cm, 20p
- Commissioned by *I'm You*, Daejeontaeil Festival for the 50th Anniversary of the Death of Chuntaeil

g. Yi mi-sun, *#onepageaday*, 2021-2022, original drawing, portfolio album, 2 books

h. Yi mi-sun, *A Village by the Sea in 3022, 2027*, reusable Poster, pencil, 15.5×23cm, 80p

i. Alo, *The Landscape stems from a Rice Paddy 1*, 2022, ink on chinese paper, 47×60cm

j. Alo, *The landscape stems from a Rice Paddy 2*, 2022, ink on chinese paper, 47×60cm

k. Alo, *The Enactment of Anti-Discrimination Act*, 2022, ink on paper, 21×30cm

l. Alo, *The Heritage of a City*, 2021, ink on korean paper, 35×46cm

m. Alo, *Sled on Winter Paddy*, 2022, ink on MDF, 22×28cm

n. Alo, *A Seedling Seller*, 2021, ink on MDF, 22×28cm

o. Alo, *Harvesting Chives after Winter*, 2022, ink on MDF, 28×22cm

p. Alo, *Tying Bent Rice*, 2022, ink on MDF, 28×22cm

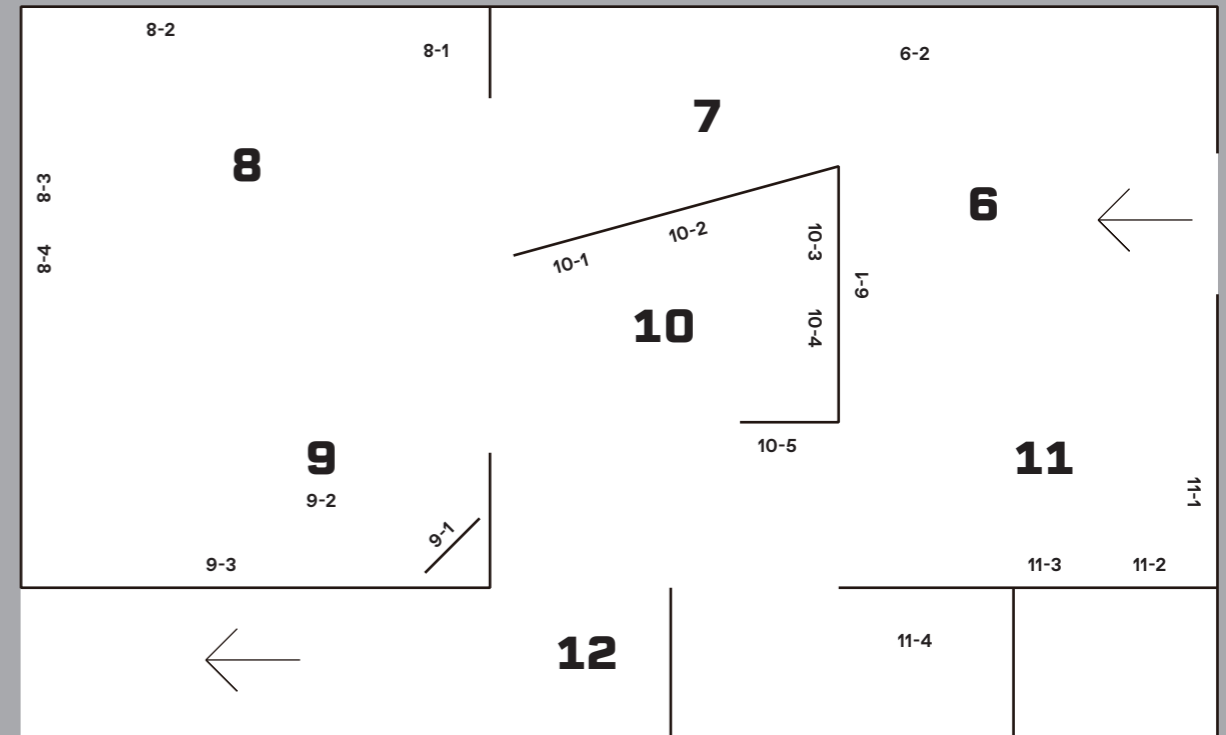
q. Alo, *Grape Tomatoes and Tools*, 2022, ink on MDF, 28×22cm

r. Alo, *Finishing Peas*, 2022, ink on MDF, 28×22cm

5-4. NoNewWork, *A Virtual Feminist Artist Residency*, 2022, Web Archive

5-5. Bomroya, *The Map of Relational Population*, 2022, Carbon paper drawing on wall, dimension variable

2F Gallery 2



6. dianalab

6-1. dianalab x Ueta Jiro, *We have encountered fences before*, 2022, single channel video, color, sound, 2hr 39min 40sec

6-2. dianalab x blblbg, *Nameless on the Map*, 2022, stickers in braille, dimension variable

7. Wu Mali x Bamboo Curtain Studio

7. Wu Mali x Bamboo Curtain Studio, *Art as Environment : A Cultural Action at the Plum Tree Creek*, 2013, © MOCA Taipei

8. The Rojava Film Commune

8-1. The Rojava Film Commune, *Komina Flim a Rojava Project Video*, 2021, video, 13 min

8-2. The Rojava Film Commune, *Lonely Trees*, 2017, HD video, 43min

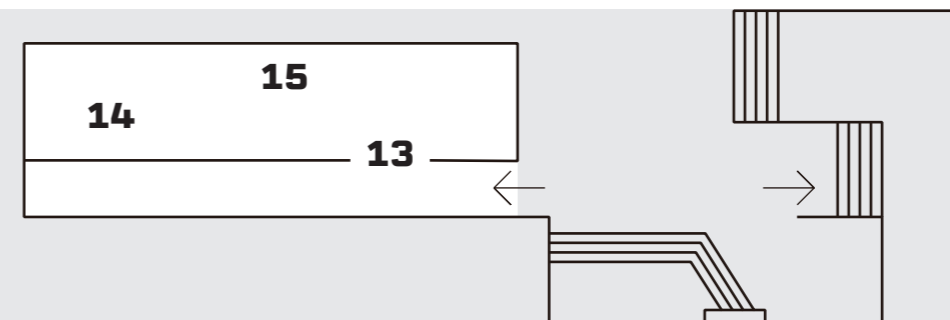
8-3. The Rojava Film Commune, *Rojava international film festival posters*, 2019-2020

8-4. The Rojava Film Commune, *Save Rojava Posters*, 2022

9. Breakwater (Youngsook Choi x Taey lohe)

9-1. Breakwater(Youngsook Choi x Taey lohe), *Fermented Flower*, 2021, Embroidered tapestry, Digital drawing print on fabric, fermented dandelion liquor half buried in soil, 4×3m wide tapestry, 5m wide soil bed

SpaceFeelux



11-2. Hyunjoo Kim x Kwanghee Cho, *Ppaepeori - Montage of time and space*, 2022, 2 channel video installation, dimension variable, 22min 2sec

11-3. Hyunjoo Kim x Kwanghee Cho, *PPaeng, Ppaengppeol Ppaeppeori*, 2022, 2 channel video installation, dimension variable, interview with six people

11-4. Hyunjoo Kim x Kwanghee Cho, *Room of reading - Voices heard outside*, multimedia installation, audience participation performance, dimension variable, 10 reading books with local dictates, audio, microphone, speaker, stand

12. Reading Room

12-1. Dong-il Kim, *Concepts and Conditions for Art as a Social Act*

12-2. Woon Gi Min, *Dreaming of an Alternative Local Ecological Community beyond the Logic and Desires of Urban Commodification*

12-3. Somi Sim, *The Map of Roads Continues : Transition from Metropolitan Areas to Local*

12-4. Yong Hae Sook, *action ---> and, or <===== interaction*

12-5. Heejeung Cho, *Person of Light, Population Associated with Locals*

12-6. Eunyoung Chae, *Drift(s) from the Temporary Present to the Distant Future*

13. Jelly Jang x tnktmke

13. Jelly Jang x tnktmke, *Random Neighbor Project*, 2022, Campaign, dimension variable

14. Small Batch Studio

14. Small Batch Studio, *Seoul Locality Recipe*, 2022, mixed media

15. Jeppe Hein

15. Jeppe Hein, *Breathe with Me*, 2022, blue paint on white paper/canvas/wall, dimension variable

*Please be advised that this work will be conducted as an audience-participating performance on December 24th(Sat). The results of the performance will be displayed until the end of the exhibition.

- Rojava Film Commune**

The Rojava Film Commune is a collective of grassroots filmmakers whose work methods are rooted in the larger political project of the formation of a stateless democracy in Rojava (Autonomous Administration of North and East Syria). Their films are part of a learning-by-doing process in filmmaking and a record of their struggles and resilience.

- Breakwater (Youngsook Choi × Taey lohe)**

Breakwater is a London-based Korean diaspora artist duo of Taey lohe and Youngsook Choi. They were organized in 2019. At this exhibition, they will unveil a work that looks back on the perilous life of immigrants from East Asia, and their wounds, going through the COVID-19 pandemic. While acknowledging that climate change, decolonization, and labor issues are closely connected, they are interested in the politics of sceneries, spiritual knowledge, and friendships and caring between various species as they work based on social practices. In 2021, they co-founded the “Decolonising Botany Working Group” at the public program Liverpool Biennial, and jointly performed *Refusing Oasis* at Kassel Documenta Fifteen.

- Small Batch Studio**

Small Batch Studio is operated by food experience designer Kang Eun-gyeong. They works on experiential design projects with an interest in the relationships between nature and people and between people and people, and the phenomena, in which all of these are generated using food as a medium based on collaboration and research. They participated in numerous group exhibitions, including *Cosmos in One Square Meter* (Lab C. 2022) and *Turn and Turn and Turn* (Factory 2, 2021–2022), and in projects like *T for 2* (Wooran Foundation, 2021) as a researcher and planner. Pikant, one of the participants of this project, is a Seoul-based design studio run by Song Min-seon and Choi Jung-won. The studio is active in the industry by using a variety of means such as posters, books, branding, animation, and motion graphics. Just like the German adjective “pikant” which is used for expressing the spicy and tangy flavor of spices, design studio Pikant pursues designs that add style and flavor to projects based on its interest in the ecosystem, culture, and arts.

- Lab C**

Lab C is a collaboration between forest curator Park Mi-ra and art director Changpa who work using three keywords: plants, region, and arts. They carefully gaze into a piece of the mountains and seas of Busan to plan experiences in those places. They have unveiled curatorial programs of planning experiences with *Time to Ramble* (2019 and 2020) at the Sujeongsan Mountain area, *Time to Ramble: the Sea* (2021) in Yeongdo-gu, Busan, and *Cosmos in One Square Meter* (2022) at Dadaepo.

Manyoung JUNG is a sound installation artist who conducts local research projects of studying the common traits of places and sounds. The Sound Scape CD series includes five editions such as “Myanmar”, “Silsangsa”, “Old Downtown Busan”, “Busan Jungang-dong Printing Alley”, and “Busan Choryang Mountainside Road,” and the “Silsangsan Sound Scape - Soribi” is on sale.

Doki KIM is an installation artist who contemplates and explores the essence of the world surrounding us, such as materials and energy, time and space, nature, and life. She is interested in how the world exists and the fundamental power of bringing about respect and awe from people. She uses natural non-material elements like heat, gravity, and light as media for thinking about such power to give shape to the ever-changing moments revealed through the relationship with materials.

Jeun LEE is a choreographer. She introduces her questions about the physical state of being aware of senses and time and the breaths generated at that moment through creative performances, visualization with images, or workshops. She continues to explore a common theme as she is interested in small motions that are unnoticeable and the connections in our bodies between senses and imagination that are not visible but do occur in our bodies by crossing over the two mediums of video work and performances. She worked as an assistant director for “See you, I’m home” (2021) of the National Dance Company of Korea and was also selected for the Seoul Dance Center Residency (2022). Some of her popular choreographs are “Crafting Body” (2018)

- Jeppe Hein**

Jeppe Hein born in 1974 in Copenhagen, Denmark, is a Danish artist based in Berlin. He studied at the Royal Danish Academy of Arts in Copenhagen and the Städel State University of Fine Arts at Frankfurt. Jeppe Hein is widely known for his production of experiential and interactive artworks that can be positioned at the junction where art, architecture, and technical inventions intersect. Unique in their formal simplicity and notable for their frequent use of humor, his works engage in a lively dialogue with the traditions of Minimalist sculpture and Conceptual art of the 1970s. Jeppe Hein’s works often feature surprising and captivating elements which place spectators at the center of events and focus on their experience and perception of the surrounding space.

- OverLab.**

OverLab. is an independent group of Gwangju-based curators that was organized in 2015. They focus on the creation, production, and local research through collaborative works with independent planners, researchers, and creators. The group, which is operated by Kim Sun-young and Park Yoo-young, has been based in Weolsan-dong, Gwangju since 2017 where it runs the pre-independent planner/researcher program “Independent Curator Collaboration (ICC)” and the program that suggests collaboration to creators, “Artist Collaboration eXchange (ACX)”. OverLab also engaged in collaborative exhibition projects on urban spaces and themes containing locality and history, including *Weolsan Blues, Overturned City* (Weolsan-dong area, 2020), *Empathy Instinct* (Asia Culture Center Creation Space 6, 2021), and *WeavingLab.* (weavinglab.creatorlink.net, 2022).

Dokyung Kim mainly works on recording and collecting recurring daily lives and giving a figure to them. She majored in sculpture and is a Gongju-based artist who is mainly active in Seoul and Gwangju. She uses not only sculptures but also drawings and video media to make fine drawings of the process and time of observing everyday objects from various perspectives. She was a participating artist at the National Museum of Contemporary Art Residency Goyang in 2013 and a visiting creator for the Asia Culture Center Creative Production Center Lab in 2017. In 2014, she planned the Mongolian Nomadic Residency Program and held solo exhibitions in Seoul, London, and Gwangju.

and “Open Ears, Closed Eyes” (2021), and she also held a solo exhibit titled “Linear and Non-linear Body” (2021).

Jinjoo KIM is interested in phenomena about the essence of objects and draws it with a pen. She closely investigates various cases, situations, and truths that occur in her and her extension to make drawings of her personal stories. She believes that in all things, there is some place for it, and she expresses herself searching for that right location. She has been a mouth and foot painting artist since 1994, and she is overcoming the limitations of speed and mediums by experimenting with various techniques such as paintings, pen drawings, illustrations, and Korean painting based on her story.

JunJun Montelibano is a Visayas-based artist who expresses multi-dimensional emotions using various mediums in diverse fields, including stage production, film production, and design, through paintings and sculptures. He recently held his 12th solo exhibition “*Eunoia & Diaboliques*. Art District Bacolod, 2022” and received the Best Indie Director award at the 2014 Philippine Movie Press Club together with the film *Sonata* of Peque Gallaga.

Joshua Serafin is a Filipino artist who is active in Brussels and Manila. He engages in a wide range of fields combining dance, performance, visual art, and choreography. His works ask questions about identity, migration, queer politics and recreation, state of existence, and the residential method of the body. He is mainly interested in the duality between physical form and expression of it shown through an alter-identity which he calls “voidness”. His performances were invited to the Ghent International Festival in Belgium, Taipei Performing Arts Center, and the VIVA ExCon in the Philippines.

- Wu Mali × The Bamboo Curtain Studio**

Wu Mali is a Taiwanese curator, installation, and socially engaged and conceptual artist. A committed feminist artist who developed numerous projects dealing with social, environmental, and ecological issues. Her works has been exhibited in Fukuoka Asian Triennale in 2005, Taipei Biennale in 2008, and Singapore Biennale in 2022, etc. She was the recipient of Taiwan National Visual Art Award in 2016 and co-curved the Taipei Biennale 2018. The Bamboo Curtain Studio, established in 1995, was one of the most important cultural and art spaces in Taiwan. It was also the first officially registered organization in the country who provided services for creative professionals worldwide.

- Jelly Jang × tnknmke**

The two teamed up to engage in public campaigns. They contemplate leading active practices with local residents to solve public issues. They unfold movements to convey the message they want to tell the public using an appropriate vessel (media). They held numerous campaigns targeting citizens, such as the “Parentheses Line Campaign,” a campaign of standing in line at bus stations in villages around Seoul, and the “I want to fall asleep campaign” which urges to keep quiet at parks. They are currently working on the Citizen Living Lab program that provides and encourages campaign methods for the little things in life at the Jeju Communication Cooperation Center “Jeju Life Public Opinion” and the Chungnam Social Innovation Center “Everyday Innovator”, among others.

- Komunitas Gubuak Kopi¹**

Gubuak Kopi, or better known as the Gubuak Kopi Community, a non-profit cultural organization based in Solok, Indonesia, was founded in 2011. This group focuses on research and development of art and media knowledge in the local city of Solok, West Sumatra. Gubuak Kopi produces and distributes media literacy knowledge through creative activities, organizes collaborations between professionals (artists, writers, and researchers) and residents in responding to local environmental and cultural issues, develops alternative media and archiving systems, and builds space for youth capacity development. Since 2017, the Gubuak Kopi Community has initiated a ‘Daur Subur’ platform as a big theme, a study of the culture that develops in agricultural communities, in Solok in particular and West Sumatra in general. ‘Daur Subur’ seeks to explore aspects of knowledge from various cultural events of the agricultural community, their sustainability, and package them to understand today’s problems.

¹ Albert Rahman Putra, Biahliil Badri, Biki Wabihamdika, Hafizan, Muhammad Riski, Volta Ahmad Jonneva, Zekalver Muharam

- Dong-il Kim**

Dong-il Kim is interested in works that conceptualize art phenomena in a sociological manner. Centering on Pierre Bourdieu, he performs critical writing at the intersecting point of Arnold Hauser, Arthur Danto, and Bruno Latour. He is currently a professor at the Daegu Catholic University Department of Global Cultural Contents and the director of the Daegu Catholic University Center for Multicultural Studies. He completed his undergraduate, graduate, and doctorate courses at Sogang University Department of Sociology. He received the Korean Sociological Association paper award (2009) and Monthly Art Award in academic critique (2011). His work *Sociology of Representative Struggles* was selected as the best academic book in social sciences by the National Academy of Sciences in 2021.

- Woon Gi Min**

Believing that the social and local roles of art are important, he opened an alternative cultural space called Space Beam in 2002 and has planned and held various exhibitions, and public art projects, and educational programs, as well as published critical writings. He is currently striving to fulfill his role by forming networks with various civic cultural art organizations and activists to create “Open City Community Incheon” based in Baeda-ri Village in Dong-gu, Incheon. He looks for solutions in concrete situations and contexts rather than in fields that institutionalize art activities. He is highly interested in finding various activity methods and languages while achieving smooth communication and practical changes.

- Somi Sim**

Somi Sim is an independent curator based in Seoul and Paris. She recreates the relationship between urban spaces and artist practices with curatorial discourses. Her main works include *Do You Miss the Future?*, *REAL-Real City*, and *2018 Public Art: Ringring Belt*, and some of her publications are *Curating the Pandemic* and *Drifting Nearby: Public Transition of Post-Pandemic Cities*. She is an editor for the quarterly cultural journal Culture/Science, and she is also active at the artists’ collective “Re-tracing Buro”.

- Yong Hae Sook**

Yong Hae Sook majored in sculpture at Hongik University. She earned her master’s degree majoring in Asian cultural research at the Sungkonghoe University Graduate School and earned her doctorate in sociology at the same university. She runs “Pink Factory”, a local cultural space in Hongcheon since 2014, and she is based in Seoul and Hongcheon where she engages in planning, research, and creative activities.

- Heejung Cho**

Heejung Cho is a full-time researcher at the Sogang University Institute of Social Science. She is a doctor of politics who has been traveling to local areas for six years to conduct her research. Mainly interested in new values and methods, she believes that everyone’s interests and collaboration must be performed dynamically to provide the conditions that can enhance the quality of life. She worked at the National Election Commission and the National Assembly Research Service, and she is currently serving as the research chief at The Possibility Lab where the possibilities of locality and youths are studied.

- Eunyoung Chae**

Eunyoung Chae is an interlocal curator highly interested in the coexistence and practice of visual arts with a relationship of healthy tension between capital and systems in urban spaces. She operates “Space Imsi” and the inter-local webzine “Comrade Critique Samsa” which both aim toward curatorial based on researching the themes of trans-locality, ecosystem, and politics.

Exhibition Associated Programs

▪ ARKO Art Center* SCAS[Society of Contemporary Art Science] Joint Symposium 'Moving Boundaries'

: 2022.11.19.(Fri) 13:00, ARKO Art Center 3rd Floor, Seminar Room
(Participants: Jeong Hyeon-ju(Seoul National University), Mun Jae-won(Busan National University), Park So-young(Yeungnam University), Hong Sung-tae, Jung Jong-eun(Sangji University), Kim Dong-il(Daegu Catholic University), Yong Hae-suk('pink factory' operator, writer), Hyunjoo Kim x Kwanghee Cho(Artists) / Moderator: Jo Seon-ryeong(Busan National University))

▪ Komunitas Gubuak Kopi's Performance related with The Pos Ronda Project

: 2022.11.18.(Fri) 15:00, ARKO Art Center Gallery 1

▪ Komunitas Gubuak Kopi's Game Workshop related with The Pos Ronda Project

: 2022.11.20.(Fri) 14:00, ARKO Art Center Gallery 1

▪ Lab C x Doki KIM's Performance 'Children of the Sea' related with Delta Space

: 2022.12.3.(Sat), 12.4.(Sun) 14:00, 16:00, ARKO Art Center Gallery 1

▪ dianalab's Performance related with Nameless on the Map

: 2023.1.6.(Fri) 14:00-16:00, ARKO Art Center Gallery 2

▪ Jeppe Hein's Global Acts Project related with Breath with Me

: 2022.12.24.(Sat), SpaceFeelux

▪ 'Locality Recipe Workshop' by Small Batch Studio

: 2023.1.7.(Sat), SpaceFeelux

*Please check the website or SNS a week before the event for detailed schedules and ways to apply for participation.

ARKO Art Center

3, Dongsung-gil, Jongno-gu,
Seoul 03087
02-760-4850

www.arko.or.kr/artcenter

Instagram @arko_art_center

Twitter @arkoartcenter

Facebook

Youtube ARKO Art Center

Opening Hours

11AM - 7PM

Closed on Monday and January 1st

Admission

Free



Exhibition Overview

▪ Period : 2022.11.18.(Fri) - 2023.1.21.(Sat)

▪ Artists : GEOJE SUMDO, Eunbi Kwon, Hyunjoo Kim x Kwanghee Cho, NoNewWork, dianalab, Rojava Film Commune, Breakwater(Youngsook Choi x Taey lohe), Small Batch Studio, Lab C, Jeppe Hein, OverLab, Wu Mali x Bamboo Curtain Studio, Jelly Jang x tnknmke, Komunitas Gubuak Kopi

▪ Venue : ARKO Art Center Gallery 1, 2, SpaceFeelux

▪ Organized by : ARKO Art Center

▪ Detailed description of works :
Online Audio Guide